

**KE8-E extended
arithmetic element
engineering drawings**

MASTER DRAWING LIST

MAINTENANCE MANUALS		UNIT VARIATIONS									
NO.	TITLE	K	E	E	P	D	P	P	P	P	P
	KE8-E EXT ARITH ELEM	X									

USED ON OPTIONS	

DRN.	K. GULICK	DATE	7-26-71
CHK'D.	K. GULICK	DATE	7-26-71
ENG.	<i>Ed Warner</i>	DATE	8/18/71
PROJ. ENG.	<i>S. Steele</i>	DATE	8/18/71
PROD.	<i>R. Petersen</i>	DATE	5/18/71
FIRST USED ON	PDP8-E		
SCALE	NONE		
SHEET	1	OF	2

DIGITAL EQUIPMENT CORPORATION
MAYNARD, MASSACHUSETTS

TITLE
EXTENDED ARITH ELEMENT

SIZE	CODE	NUMBER	REV.
A	ML	KE8-E	C

PRINT SET		DWG. NO.	REV. NO. OF LET. SHEETS	TITLE	OPTION NO.
KE8-E	REV.				
X		D-UA-KE8-E-0	1	EXTENDED ARITH ELEMENT	
X		A-PL-KE8-E-0	1	EXTENDED ARITH ELEMENT (PL)	
		E-CS-M8340-0-1	#	DECODER & STEP COUNTER EAE	
X		E-CS-M8341-0-1	#	MULTIPLEXER & TIMING GEN EAE	
X		B-UA-H851-0-0	1	H851 EDGE CONNECTOR	MM8-E
		D-FD-KE8-E-1	1	EAE FLOW DIAGRAM	
X		D-FD-KE8-E-2	A	ROM ENCODING FOR EAE CONT	
		DEC 8E DOLA-PB		KE8/E EAE INSTRUCTION TEST 1	
		DEC 8E DOLA-D		KE8/E EAE INSTRUCTION TEST 1	
		DEC 8E DOLA-PB		KE8/E EAE INSTRUCTION TEST 2	
		DEC 8E DOLA-D		KE8/E EAE INSTRUCTION TEST 2	
		A-SP-KE8-E-3	1	ENGINEERING SPECIFICATIONS	
		A-SP-KE8-E-4	1	ACCEPTANCE PROCEDURE	
		A-SP-KE8-E-5	1	CHECKOUT PROCEDURE	
X		A-AL-KE8-E-6	1	ACCESSORY LIST	

TITLE	EXTENDED ARITH ELEMENT			SHEET	2	OF	2	SIZE	A	CODE	ML	NUMBER	KE8-E	REV.	C
-------	------------------------	--	--	-------	---	----	---	------	---	------	----	--------	-------	------	---

DIGITAL EQUIPMENT CORPORATION MAYNARD, MASSACHUSETTS				LEGEND		QUANTITY / VARIATION													
ACCESSORY LIST				D DOCUMENT DN DOCUMENT CHANGE NOTICE															
MADE BY DATE		CHECKED DATE		SECTION		PA PAPER TAPE ASCII													
J. McCluskey 4/19/72		J. McCluskey 2/9/72				PB PAPER TAPE BINARY													
ENG L. Klotz DATE 4/19/72		PROD J. McCluskey DATE 4/19/72		ISSUED SECT.		PM PAPER TAPE READ-IN-MODE													
ITEM NO.	DWG NO. / PART NO.	DESCRIPTION				KE8-E								KIT CHECK	BY	DATE	INSTALLATION CHECK	BY	DATE
1	M8340	EAE Decoder and Stepcounter module				1													
2	M8341	EAE Multiplexer and Timing Generator Module				1													
3	H851	Edge Connectors				3													
4	LIBKIT-8E-KE8-E	Program Library Kit For KE8-E				1													
5	KE8-E	KE8-E Maintenance Manual				1													
		Note: It item 5 is temporarily waived ship the following.																	
	A-SP-KE8-E-3	KE8-E Engineering Specifications				1													
	A-SP-KE8-E-4	KE8-E Acceptance Procedure				1													
TITLE Accessory List. <input type="checkbox"/>				ASSY. NO.		SIZE CODE A AL		NUMBER KE8-E-6				REV.		ECO NO					
SHEET OF				DIST.															

DIGITAL EQUIPMENT CORPORATION
MAYNARD, MASSACHUSETTS
PARTS LIST

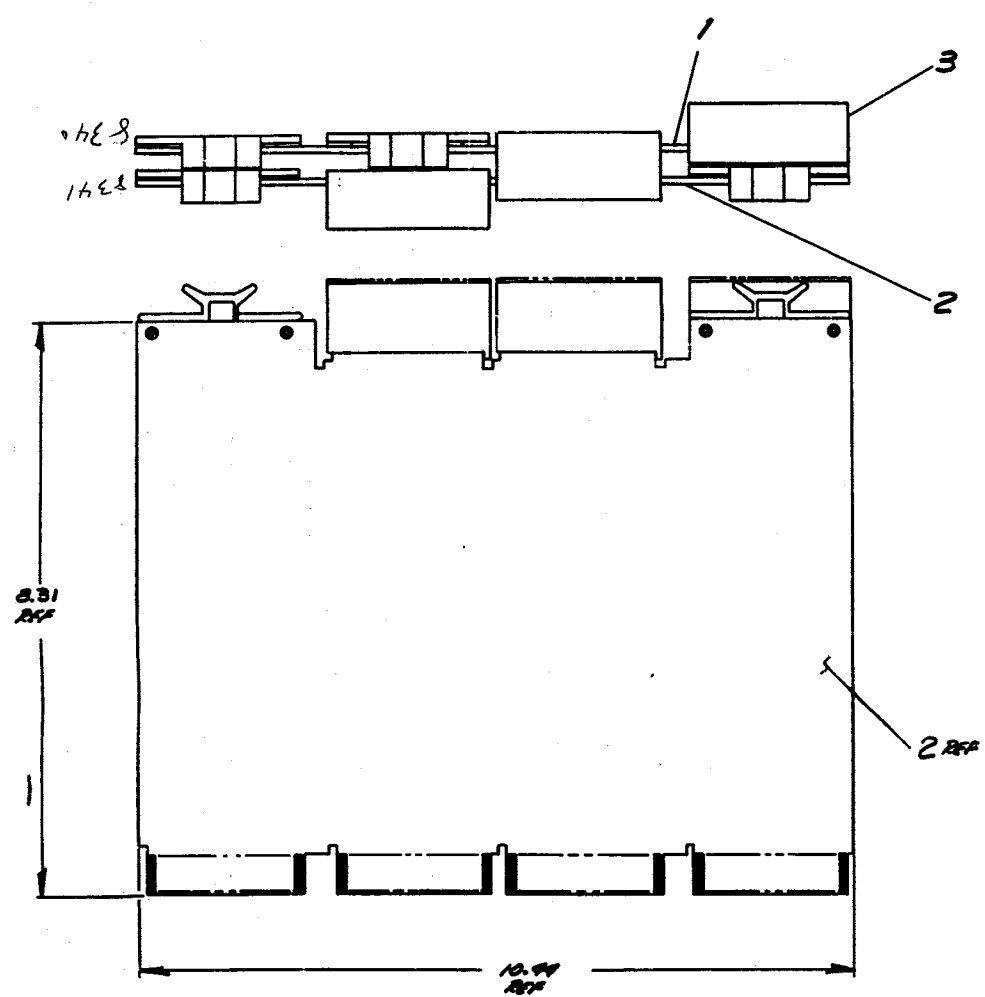
QUANTITY / VARIATION

MADE BY KEN GULICK CHECKED KEN GULICK SECTION
 DATE 7/28/71 DATE 7/29/71 1
 ENG Ronald H. Whem PROD P. Peters ISSUED SECT.
 DATE 8/18/71 DATE 8/19/71 1

ITEM NO.	DWG NO. / PART NO.	DESCRIPTION	KE8-E	QUANTITY / VARIATION										
				1	2	3	4	5	6	7	8	9	10	
1	E-CS-M8340-0-1	DECODER & STEP COUNTER EAE		1										
2	E-CS-M8341-0-1	MULTIPLEXER & TIMING GEN. EAE		1										
3	B-UA-H851-0-0	H851 EDGE CONNECTOR	3											

TITLE: EXTENDED ARITH ELEMENT ASSY NO. D-UA-KE8-E-0 SIZE CODE A PL NUMBER KE8-E-0 REV. ECO NO.
 SHEET 1 OF 1 DIST. G

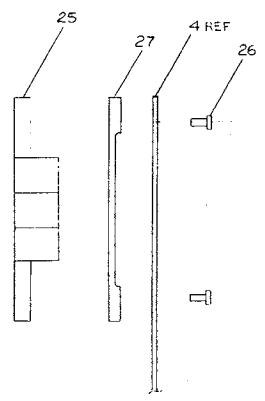
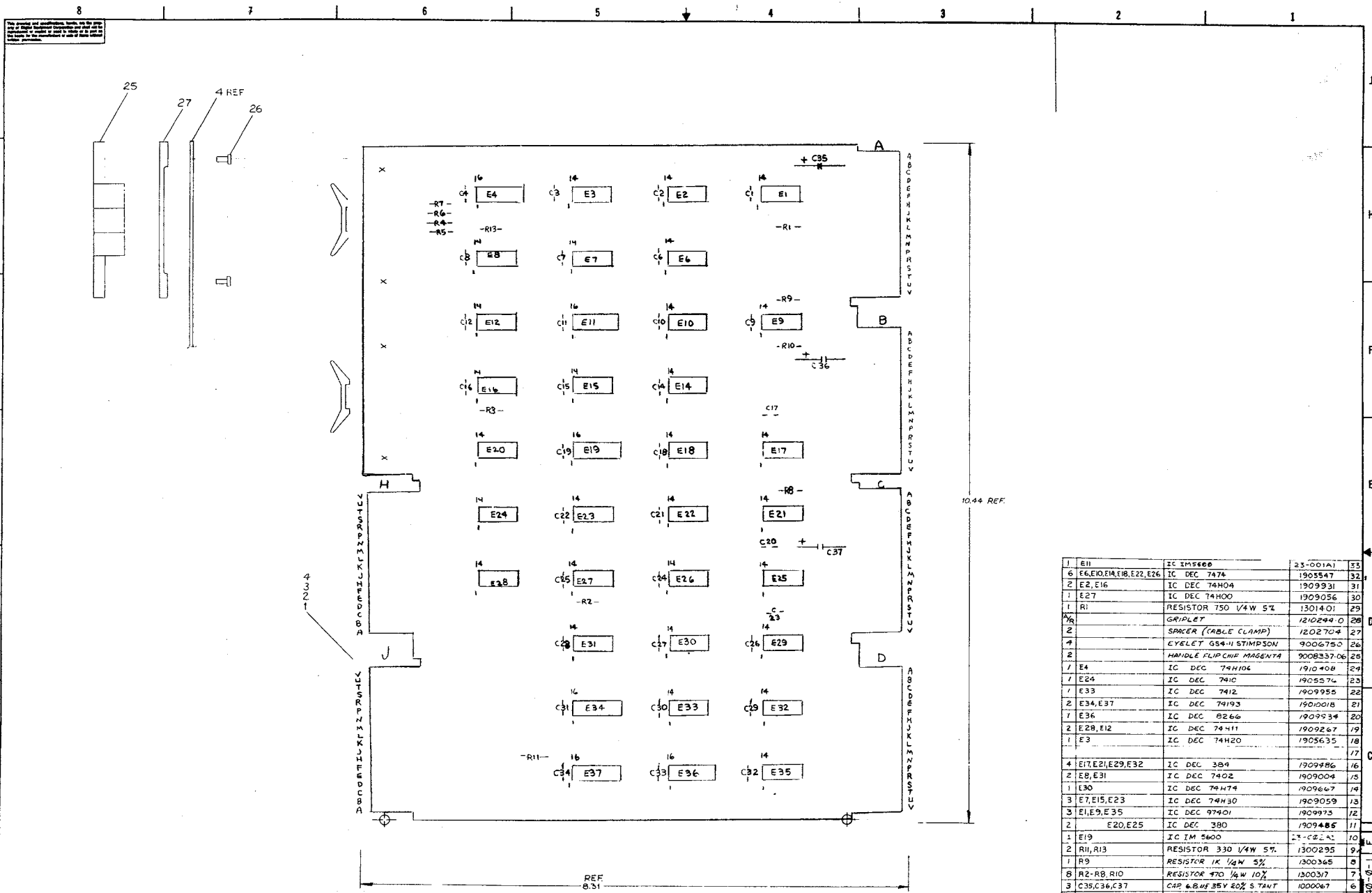
This drawing and specifications, herein, are the property of Digital Equipment Corporation and shall not be reproduced or copied or used in whole or in part as the basis for the manufacture or sale of items without written permission.



REV.	
CHG	
REV.	
CHG	

FIRST USED ON OPTION/MODEL PDP8-E	QTY.	DESCRIPTION	PART NO.	ITEM NO.
PARTS LIST				
UNLESS OTHERWISE SPECIFIED DIMENSION IN INCHES. TOLERANCES	DRY <i>Richard</i>	DATE 7/21/71	digital EQUIPMENT CORPORATION MAYNARD MASSACHUSETTS	
DECIMALS	CHK'D. <i>Richard</i>	DATE 7/21/71		
ANGLES	ENG. <i>Richard</i>	DATE 8/18/71	TITLE EXTENDED ARITH ELEMENT	
.XXX - .005 .XX - .02 .X - .1	PROJ. ENG. <i>S. Lewis</i>	DATE 8/18/71		
REMOVE BURRS AND BREAK SHARP CORNERS SURFACE QUALITY ✓	PROP. <i>R. Williams</i>	DATE 8/18/71	SIZE CODE DUA KE8-E-Ø	
MATERIAL	NEXT HIGHER ASSY.			
FINISH	SCALE <i>1:1</i>	SHEET 1 OF 1	NUMBER DUA KE8-E-Ø	

REV. 1000 12/61
DUA KE8-E-Ø

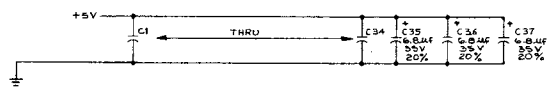


4
N
Z
4

10.44 REF.

DEC	QTY	REF	DESCRIPTION
DEC 74193	8	16	
DEC 8271	8	16	
DEC 384	1	8	
DEC 380	1	8	
DEC 7476	5	13	

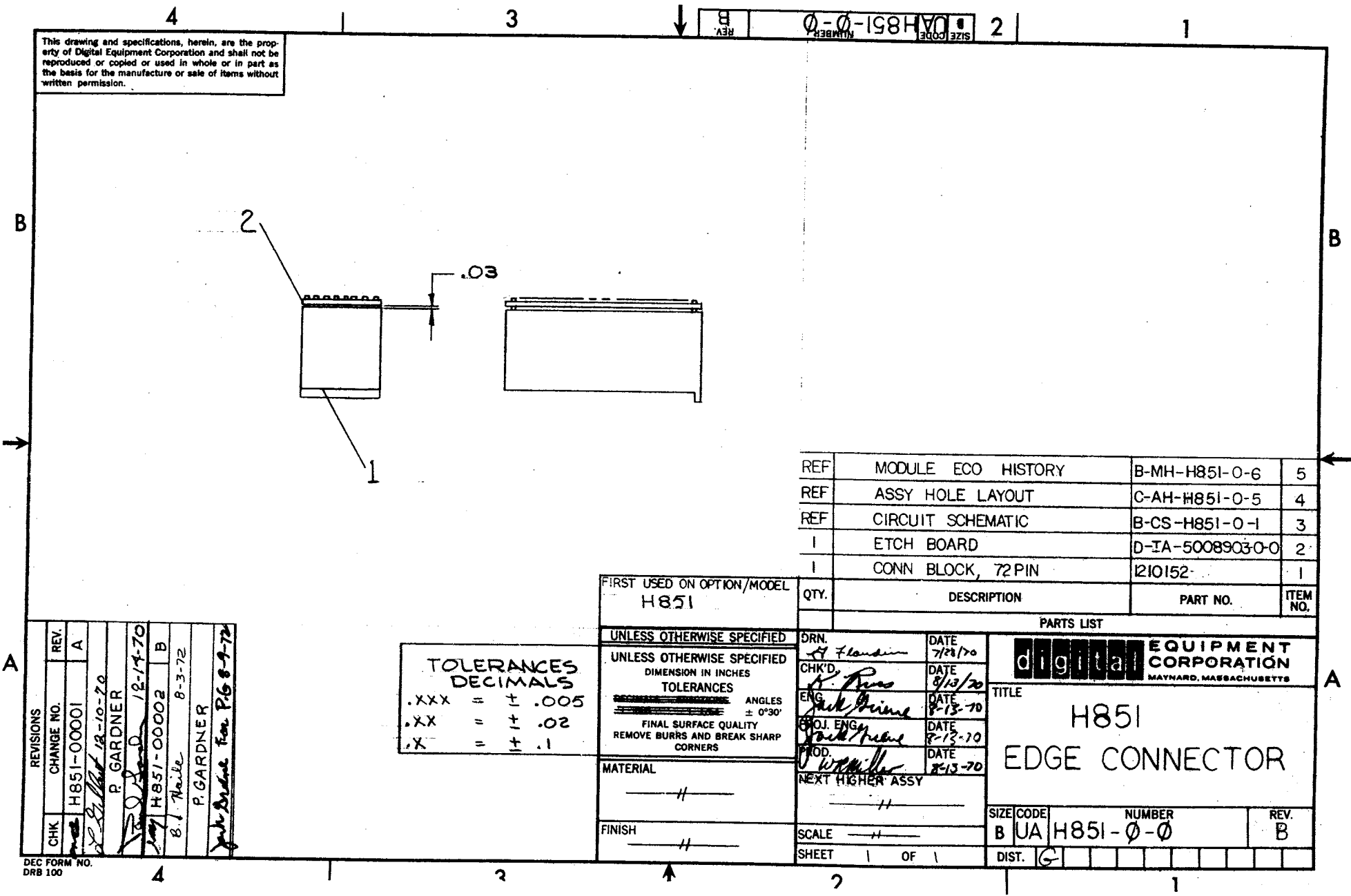
BC1, CC1, DC1,
AC2, BC2, CC2, DC2,
AF1, BF1, CF1, DF1,
AF2, BF2, CF2, DF2,
AN1, BN1, CN1, DN1,
AN2, BN2, CN2, DN2,
AT1, BT1, CT1, DT1,
AT2, BT2, CT2, DT2,



QTY	REF DESIGNATION	DESCRIPTION	PART NO.	QTY
1	E11	IC IM5600	23-001A1	33
6	E6, E10, E11, E12, E22, E26	IC DEC 7474	1905547	32
2	E2, E16	IC DEC 74H04	1909931	31
1	E27	IC DEC 74H00	1909056	30
1	R1	RESISTOR 750 1/4W 5%	1301401	29
1	R2	GRIPLET	1210244 0	28
2		SPACER (TABLE CLAMP)	1202704	27
4		EYELET GS4-11 STIMPSON	9002750	26
2		HANDLE FLIP CNF MAGENTA	9008337-06	25
1	E4	IC DEC 74H104	1910408	24
1	E24	IC DEC 7410	1905574	23
1	E33	IC DEC 7412	1909955	22
2	E34, E37	IC DEC 74193	19010018	21
1	E36	IC DEC 8266	1909534	20
2	E28, E12	IC DEC 74411	1909267	19
1	E3	IC DEC 74H20	1905635	18
				17
4	E17, E21, E29, E32	IC DEC 384	1909486	16
2	E8, E31	IC DEC 7402	1909004	15
1	E30	IC DEC 74H74	1909667	14
3	E7, E15, E23	IC DEC 74H30	1909059	13
3	E1, E9, E35	IC DEC 97401	1909973	12
2	E20, E25	IC DEC 380	1909485	11
1	E19	IC IM 5600	23-C82A1	10
2	R11, R13	RESISTOR 330 1/4W 5%	1300295	9
1	R9	RESISTOR 1K 1/4W 5%	1300365	8
8	R2, R8, R10	RESISTOR 470 1/4W 10%	1300317	7
3	C35, C36, C37	CAP 4.8UF 35V 20% STANT	1000067	6
32	C1-C4, C6-C12, C14-C18	CAP .01UF 100V 20% DISC	1000610	5
1		ETCHED BOARD	5009603	4
REF		MODULE ECO HISTORY	B-MH-M8340-04	3
REF		ASSY/DRILLING HOLE LAYOUT	D-MH-M8340-05	2
REF		X-Y COORDINATE HOLE LOCATION	K-CO-M8340-04	1

EAE EQUIPMENT CORPORATION
 TITLE: EAE DECODER & STEP COUNTER
 DEC NO. EIA NO. DEC NO. EIA NO. SCALE 2:1
 SHEET 1 OF 2

This drawing and specifications, herein, are the property of Digital Equipment Corporation and shall not be reproduced or copied or used in whole or in part as the basis for the manufacture or sale of items without written permission.



REF	MODULE ECO HISTORY	B-MH-H851-0-6	5
REF	ASSY HOLE LAYOUT	C-AH-H851-0-5	4
REF	CIRCUIT SCHEMATIC	B-CS-H851-0-1	3
1	ETCH BOARD	D-IA-5008903-0-0	2
1	CONN BLOCK, 72 PIN	I210152	1

QTY.	DESCRIPTION	PART NO.	ITEM NO.
------	-------------	----------	----------

digital EQUIPMENT CORPORATION
MAYNARD, MASSACHUSETTS

TITLE
H851
EDGE CONNECTOR

SIZE CODE NUMBER REV.
B UA H851-0-0 B

DRN.	<i>A. Flouin</i>	DATE	7/28/70
CHK'D.	<i>P. Davis</i>	DATE	8/13/70
ENG.	<i>Jack Prime</i>	DATE	8-13-70
PROJ. ENG.	<i>Jack Prime</i>	DATE	8-13-70
PROD.	<i>W. Miller</i>	DATE	8-13-70
NEXT HIGHER ASSY	—		
SCALE	—		
SHEET	1	OF	1

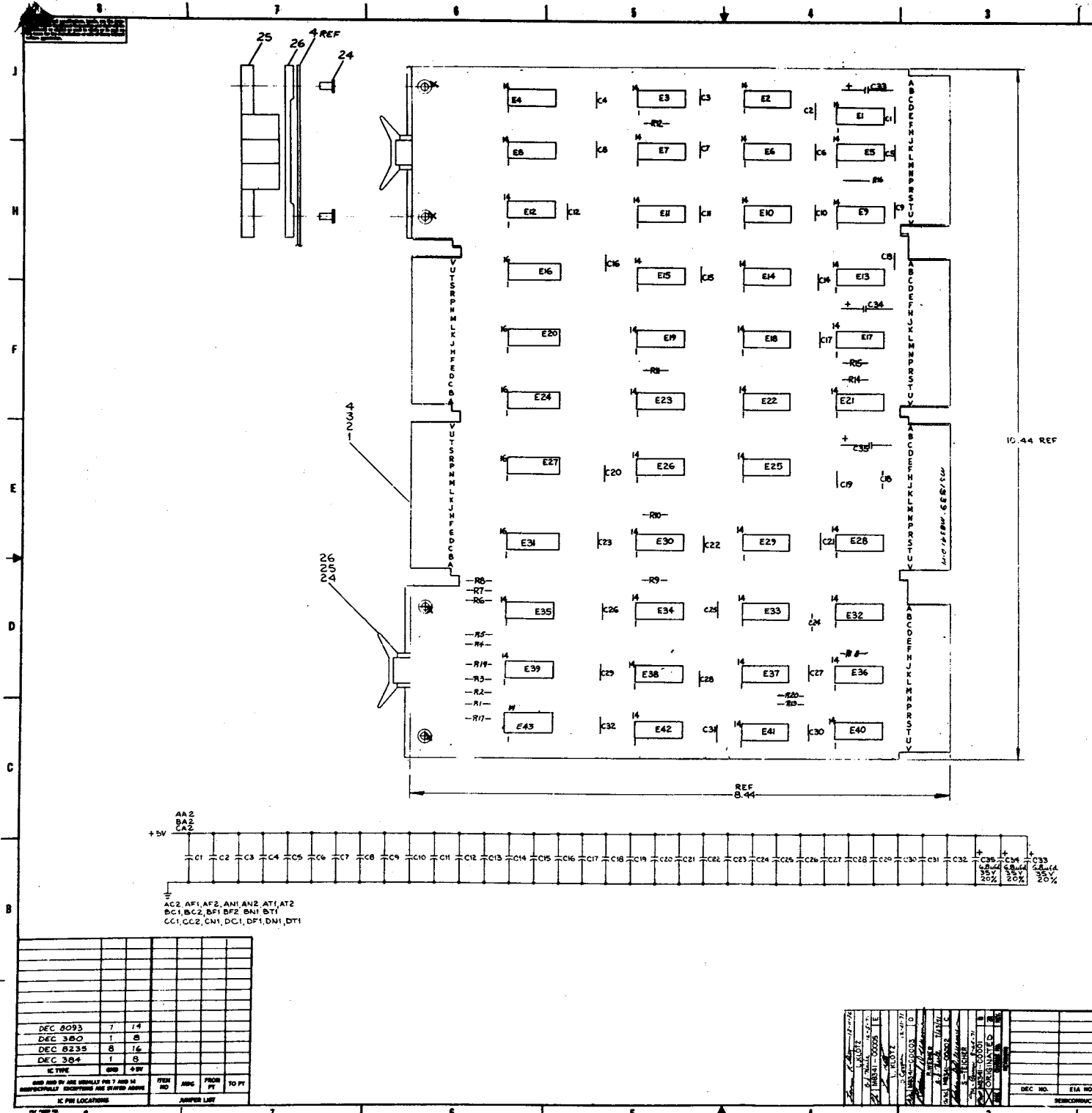
FIRST USED ON OPTION/MODEL H851
UNLESS OTHERWISE SPECIFIED DIMENSION IN INCHES TOLERANCES ANGLES ± 0°30'
MATERIAL —
FINISH —

TOLERANCES DECIMALS	
.XXX	= ± .005
.XX	= ± .02
.X	= ± .1

REV.	CHANGE NO.	REV.
A	H851-00001	A
B	H851-00002	B

P. Gardner 12-10-70
P. Gardner 12-14-70
B. Heile 8-3-72
P. Gardner
Jack Prime For P.6 8-9-72

DEC FORM NO. DRB 100



NOTES:

1	E 43	YC DEC 8093	110837	28
2	GRIPLET	120244-C	120244	27
3	SPACER (CABLE CLAMP)	120270-A	120270	26
4	HANDLE, FLIP CHIP - MAGENTA	90C833T-06	90C833T-06	25
5	EYELET GS4-11 STIMPSON	90C6150	90C6150	24
6	E15	IC DEC 7412	1909953	23
7	E23	IC DEC 7416	1909928	22
8	E32, E36, E22	IC DEC 8801	1909705	21
9	E12	IC DEC 74111	1909267	20
10	E7, E9, E34	IC DEC 74C2	1909004	19
11	E21, E19, E28, E39, E21	IC DEC 74C9	1909686	18
12	E2, E14, E33, E35	IC DEC 7410	1909576	17
13	E8	IC DEC 74H53	1909062	16
14	E11, E26	IC DEC 7486	1910011	15
15	E18, E25, E37	IC DEC 97401	1909473	14
16	E3, E29, E40	IC DEC 380	1909445	13
17	E16, E20, E24, E27, E31	IC DEC 8235	1909935	12
18	E13, E13, E17, E21, E41	IC DEC 74H79	1909667	11
19	E30	IC DEC 384	1909486	10
20	E6, E38	IC DEC 7400	1909575	9
21	E6, E8, E9, E15	RES 1K 1/4W 5%	1909365	8
22	R1, R2, R3, R4, R5 R7, R8, R11, R12, R20 R13, R14, R16, R17, R18, R19	RES 470 1/4W 10%	1909517	7
23	C38, C34, C35	CAP 6.8uF 35V 20% TANT	100007	6
24	C1 THRU C32	CAP. 0.1uF 100V 20% DISC	1001670	5
25		ETCHED CIRCUIT BOARD	5009604	4
26		MODULE ECC HISTORY	B-MH-MB341-0-1	3
27		ASSY/DRILLING HOLE LAYOUT	D-MH-MB341-0-1	2
28		X-Y COORDINATE HOLE LOCATION	KCO-MB341-0-1	1

DATE	BY	REV	DESCRIPTION
DEC 8093		7	14
DEC 380		1	8
DEC 8235		8	16
DEC 384		1	8

IC TYPE	QTY	REF	FROM	TO
AA2	1	AA2		
BA2	1	BA2		
CA2	1	CA2		

ETCH BOARD REV D

DATE

DESIGNED BY: [Signature]

CHECKED BY: [Signature]

APPROVED BY: [Signature]

DATE: 2/1

REV: 1

EQUIPMENT CORPORATION

MULTIPLEXERS & TIMING GEN EA

ECS MB341-0-1

DEC NO. E1A NO. DEC NO. E1A NO.

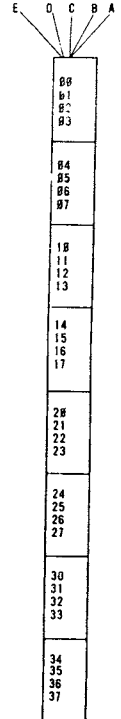
SEMICONDUCTOR CONVERSION CHART

This drawing and specifications, herein, are the property of Digital Equipment Corporation and shall not be reproduced or copied or used in whole or in part as the basis for the manufacture or sale of items without express permission.

NOTES:
 1. IF ANY CHANGES ARE TO BE MADE TO THIS PRINT FIRST CHECK WITH PURCHASE SPEC'S A-PS-23-001A1 AND A-SP-23-002A1.

ROM 1
 ENABLE IF MAJOR STATE = F DR E
 EIR 3 → A
 EIR 2 → B
 EIR 1 → C
 EIR 0 - NEW → D
 EXECUTE → E

ROM 2
 ENABLE IF MAJOR STATE = F
 EIR 3 → A
 EIR 2 → B
 EIR 1 → C
 EIR 0 → D
 OLD → E



FUNCTION	Y1	Y2	Y3	Y4	Y5	Y6	Y7	Y8	OCTAL
F - NOP	1	1	1	1	1	1	1	1	377
F - ACS + SCL	1	1	1	1	1	1	1	1	377
F - MUY	1	1	1	1	0	0	0	0	371
F - DVI	1	1	1	1	1	1	1	1	377
F - NMI	0	1	1	0	0	0	1	1	143
F - SHL	0	1	1	1	1	1	1	1	377
F - ASR	0	1	1	1	1	1	1	1	171
F - LSR	1	1	1	1	0	0	0	0	371
F - SCA	1	1	1	1	1	1	1	1	377
F - DAD	1	1	1	1	1	1	1	1	371
F - DST	1	1	1	1	0	0	1	1	377
NOP	1	1	1	1	1	1	1	1	377
F - DPSZ	1	1	1	1	1	1	1	1	377
F - DPIC	1	0	0	1	1	0	0	1	231
F - DCM	1	0	0	1	1	0	0	1	231
F - SAM	1	1	0	1	1	0	0	1	331
E - NOP	1	1	1	1	1	1	1	1	377
E - SCL	1	1	1	1	1	1	0	0	376
E - MUY	1	0	1	1	0	1	1	1	267
E - DVI	1	0	1	0	0	0	0	1	241
NOT USED									X
E - SHL	0	1	1	0	0	0	1	0	142
E - ASR	1	1	1	1	0	1	1	0	366
E - LSR	1	1	1	1	1	1	0	0	366
NOT USED									X
E - DAD	1	1	0	1	1	0	0	1	331
E - DST	1	1	1	1	1	1	1	1	377
NOT USED									X
NOT USED									X
NOT USED									X
NOT USED									X

FUNCTION	Y1	Y2	Y3	Y4	Y5	Y6	Y7	Y8	OCTAL
NOP	1	1	1	1	1	1	1	1	377
ACS	1	1	1	1	1	1	1	1	177
NEW MUY	1	1	0	1	1	0	0	1	331
NEW DVI	1	1	0	1	1	0	0	1	331
NMI	1	1	0	1	1	1	1	1	337
SHL	1	1	1	1	1	0	1	1	372
ASR	1	1	1	1	1	0	1	0	372
LSR	1	1	1	1	1	0	1	0	372
SCA	1	1	1	1	0	1	1	1	367
DAD	1	1	1	1	1	0	0	1	371
DST	1	1	1	1	1	0	0	1	371
NOP	1	1	1	1	1	1	1	1	377
DPSZ	1	1	1	0	1	1	1	1	357
DPIC	1	0	1	1	1	1	1	1	277
DCM	1	0	1	1	1	1	1	1	277
SAM	1	0	1	1	1	1	1	1	277
NOP	1	1	1	1	1	1	1	1	377
SCL	1	1	1	1	1	1	0	0	372
OLD MUY	1	1	0	1	1	0	1	1	332
OLD DVI	1	1	0	1	1	0	1	0	332
NMI	1	1	0	1	1	1	1	1	337
SHL	1	1	1	1	1	0	1	0	372
ASR	1	1	1	1	1	0	1	0	372
LSR	1	1	1	1	1	0	1	0	372
SCA	1	1	1	1	0	1	1	1	367
SCA - SCL	1	1	1	1	0	0	1	0	362
SCA - OLD MUY	1	1	0	1	0	0	1	0	322
SCA - OLD DVI	1	1	0	1	0	0	1	0	322
SCA - NMI	1	1	0	1	0	1	1	1	327
SCA - SHL	1	1	1	1	0	1	0	0	362
SCA - ASR	1	1	1	1	0	1	0	0	362
SCA - LSR	1	1	1	1	0	1	0	0	362

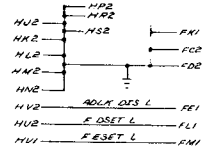
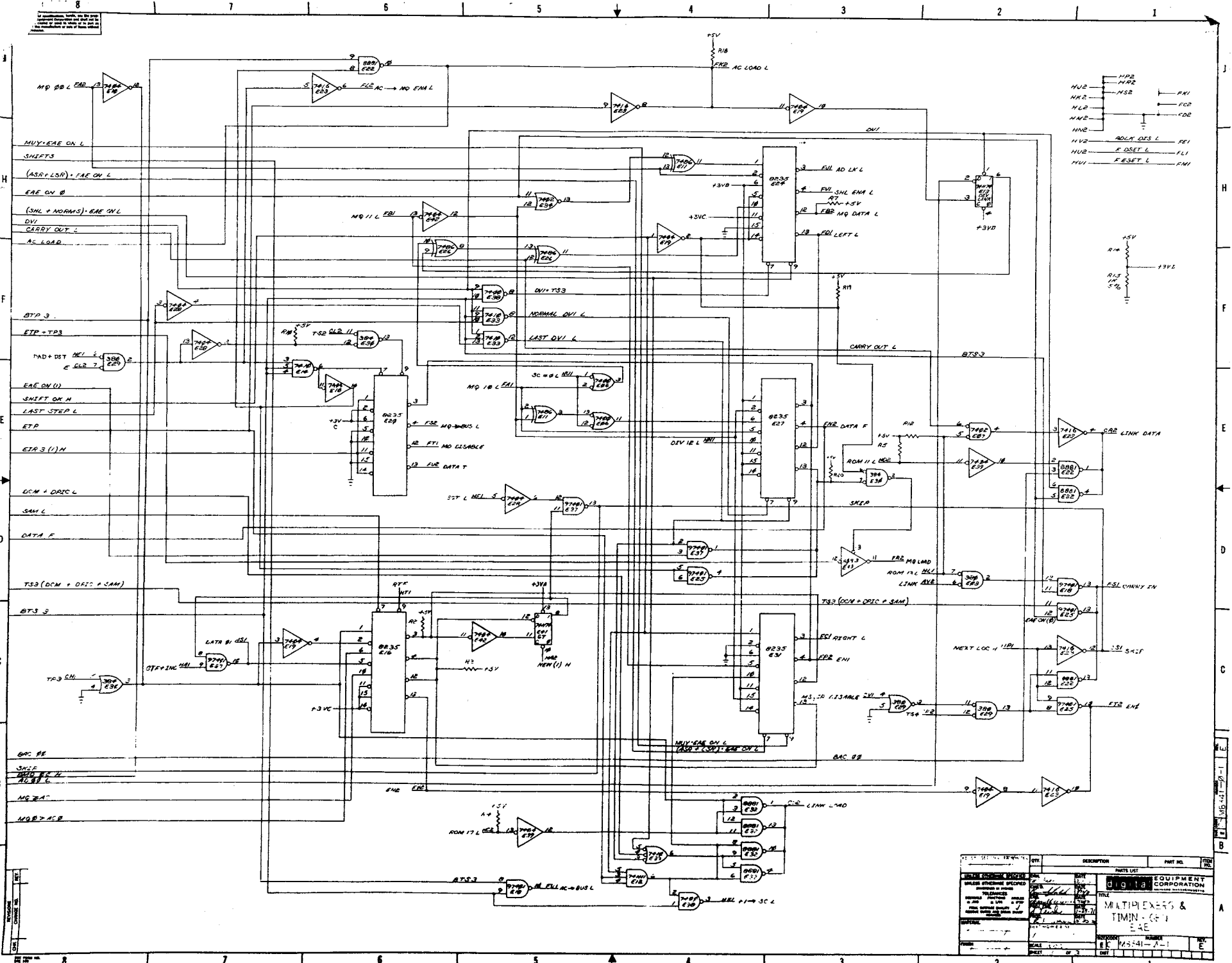
0 INDICATES ACB → LINK DATA AT TS3
 1 INDICATES TO SLOW → ADD (NOT MERELY SHIFT)
 1 INDICATES CARRY COUPLE AT TS2 (L → CARRY IN, CARRY OUT → L DATA)
 1 INDICATES LEFT SHIFT
 1 INDICATES A SHIFT OPERATION
 0 DISABLES CPU ADDER LINK GATING
 1 INDICATES LINK LOAD AT TP3
 1 INDICATES LOAD SC AT TP2

0 INDICATES ACS
 0 INDICATES DCM + SAM + DPIC
 1 INDICATES B → SC AT F - TP3
 1 INDICATES DPSZ
 1 INDICATES SCA
 0 INDICATES MA → 1 → MA, 1 → SKIP
 1 INDICATES DSET
 1 INDICATES ESET

CHK	CHANGE NO	REV
	KEB-E-00003	A
	ESTER	

FIRST USED ON OPTION/MODEL KEB-E	QTY.	DESCRIPTION	PART NO.	ITEM NO.
PARTS LIST				
UNLESS OTHERWISE SPECIFIED DIMENSION IN INCHES TOLERANCES	DRN. <i>John Chapman</i>	DATE <i>2/24/71</i>	digital EQUIPMENT CORPORATION MAYNARD MASSACHUSETTS	
DECIMALS	CHK'D. <i>W. M. K...</i>	DATE <i>2/24/71</i>	TITLE ROM ENCODING	
ANGLES	ENG. <i>W. M. K...</i>	DATE <i>2/24/71</i>		
xxx - 006	PROJ. ENG. <i>W. M. K...</i>	DATE <i>2/24/71</i>		
xx - 02	PROJ. <i>W. M. K...</i>	DATE <i>2/24/71</i>		
x - 1	PROJ. <i>W. M. K...</i>	DATE <i>2/24/71</i>		
REMOVE BURRS AND BREAK SHARP CORNERS SURFACE QUALITY	PROJ. <i>W. M. K...</i>	DATE <i>2/24/71</i>		
MATERIAL	NEXT HIGHER ASSY.	SIZE CODE	NUMBER	REV
	A-ML-KEB-E	D	FD KE 3-E-02	A
FINISH	SCALE NONE	SHEET	1 OF 1	

REV. CONTROL DFD KE 3-E-02



REV	DESCRIPTION	QTY	DESCRIPTION	PART NO.	ITEM NO.
1	DATE		DATE		
2	BY		BY		
3	CHKD		CHKD		
4	APP'D		APP'D		
5	REV		REV		
6	REV		REV		
7	REV		REV		
8	REV		REV		
9	REV		REV		
10	REV		REV		
11	REV		REV		
12	REV		REV		
13	REV		REV		
14	REV		REV		
15	REV		REV		
16	REV		REV		
17	REV		REV		
18	REV		REV		
19	REV		REV		
20	REV		REV		
21	REV		REV		
22	REV		REV		
23	REV		REV		
24	REV		REV		
25	REV		REV		
26	REV		REV		
27	REV		REV		
28	REV		REV		
29	REV		REV		
30	REV		REV		
31	REV		REV		
32	REV		REV		
33	REV		REV		
34	REV		REV		
35	REV		REV		
36	REV		REV		
37	REV		REV		
38	REV		REV		
39	REV		REV		
40	REV		REV		
41	REV		REV		
42	REV		REV		
43	REV		REV		
44	REV		REV		
45	REV		REV		
46	REV		REV		
47	REV		REV		
48	REV		REV		
49	REV		REV		
50	REV		REV		
51	REV		REV		
52	REV		REV		
53	REV		REV		
54	REV		REV		
55	REV		REV		
56	REV		REV		
57	REV		REV		
58	REV		REV		
59	REV		REV		
60	REV		REV		
61	REV		REV		
62	REV		REV		
63	REV		REV		
64	REV		REV		
65	REV		REV		
66	REV		REV		
67	REV		REV		
68	REV		REV		
69	REV		REV		
70	REV		REV		
71	REV		REV		
72	REV		REV		
73	REV		REV		
74	REV		REV		
75	REV		REV		
76	REV		REV		
77	REV		REV		
78	REV		REV		
79	REV		REV		
80	REV		REV		
81	REV		REV		
82	REV		REV		
83	REV		REV		
84	REV		REV		
85	REV		REV		
86	REV		REV		
87	REV		REV		
88	REV		REV		
89	REV		REV		
90	REV		REV		
91	REV		REV		
92	REV		REV		
93	REV		REV		
94	REV		REV		
95	REV		REV		
96	REV		REV		
97	REV		REV		
98	REV		REV		
99	REV		REV		
100	REV		REV		

DIGITAL EQUIPMENT CORPORATION MAYNARD, MASSACHUSETTS				LEGEND		QUANTITY/VARIATION								
ACCESSORY LIST				D	DOCUMENT									
MADE BY		J. McCluskey	CHECKED	SECTION	PA	PAPER TAPE ASCII								
DATE		4/19/72	DATE	2/9/72	DN	DOCUMENT CHANGE NOTICE								
ENG		L. Klotz	PROD	ISSUED SECT.	PB	PAPER TAPE BINARY								
DATE		4/19/72	DATE	4/19/72	PM	PAPER TAPE READ-IN-MODE								
ITEM NO.	DWG NO. / PART NO.	DESCRIPTION			KE8-E									
1	M8340	EAE Decoder and Stepcounter module			1									
2	M8341	EAE Multiplexer and Timing Generator Module			1									
3	H851	Edge Connectors			3									
4	LIBKIT-8E-KE8-E	Program Library Kit For KE8-E			1									
5	KE8-E	KE8-E Maintenance Manual			1									
		Note: Item 5 is temporarily waived ship the following.												
	A-SP-KE8-E-3	KE8-E Engineering Specifications			1									
	A-SP-KE8-E-4	KE8-E Acceptance Procedure			1									
TITLE: Accessory List. <input type="checkbox"/>				ASSY. NO	SIZE CODE	NUMBER		REV.	ECO NO					
					A AL	KE8-E-6								
SHEET OF				DIST.										

8		7		6		5		4		3		2		1						
NEW ONLY		NEW OR OLD										NEW ONLY		OLD ONLY						
MAJ STATE	TIME STATE	CP EVENTS	ACS EIR = 1	MUY 2	DYI 3	NMI 4	SHL	ASR 6	LSR 7	SCA NEW:10 OLD:1X	DAD 11	DST 12	SWAB OR SWBA	DPIC 14	DPSZ 15	DCM 16	SAM 17	SCL 1	COMMON EAE EVENTS	
D	TS1	PC UPDATE																		0 → EIR
	TS2	MDB-2 → IR																		IF EAE INST. MDB.8.9.β → EIR
	TS3	AC LOAD AT TP3 DATA T L MQ LOAD AT TP3 IF MD7 = 1	SET SCLD AT TP2 L DATA BUS → SC CBL	0 SC LINK LOAD (B-L) ADLK DIS I	0 → SC	0 → SC START EAE TO AT TP3 ACB → L DATA IF EAE ON, SHIFT LEFT UNTIL ACB ≠ AC1, OR AC1-MQ11 = 0, +1 → SC RESTART CP IF "NEW" AND AC. MQ=4000000, CBL ADLK DIS L		ACB → LINK DATA ADLK DIS L LINK LOAD (ACB-LINK)	ADLK DIS L LINK LOAD (B-LINK)	SCV DATA → DATA	ADLK DIS L LINK LOAD (B-L)			IF MODE = A AND SWAB, SET MODE B IF MODE = B AND SWBA, SET MODE A	AC-MQ, MQ-AC BECAUSE OF INSTR. ADLK DIS L CARRY IN CARRY OUT → LINK DATA [MQ LOAD, AC LOAD] LINK LOAD START EAE TC, ONE CYCLE ONLY L → CARRY IN CARRY OUT → LINK DATA AC LOAD, MQ LOAD LINK LOAD	IF AC, MQ = B. 1 → SKIP	AC-MQ, MQ-AC BECAUSE OF INSTR. ADLK DIS L CARRY IN CARRY OUT → LINK DATA [MQ LOAD, AC LOAD] LINK LOAD START EAE TC, ONE CYCLE ONLY L → CARRY IN CARRY OUT → LINK DATA AC LOAD, MQ LOAD LINK LOAD	ADLK DIS L DATA F CARRY IN ENB L MQ → EN 2 L ADDERS CARRY OUT → LINK DATA [AC LOAD] LINK LOAD GT GATING ENA GT LOAD		
	TS4		1 → F	ENB CARRY IN (MA) NEW: 1 → D OLD: 1 → E	1 → SKIP	1 → F	1 → SKIP	ENB CARRY IN (MA) NEW: 1 → D OLD: 1 → E	1 → SKIP	1 → F	1 → SKIP	1 → F	1 → F	1 → F	1 → F	1 → F	1 → F	1 → F	1 → F	1 → SKIP
C	ALL	OBTAIN OPERAND ADDRESS																		
E1	TS2																			
	TS3	DATA T L																		
	TS4																			
B	TS2																			
	TS3	DATA T L																		
	TS4																			
A	TS2																			
	TS3	DATA T L																		
	TS4																			

REV. NO.	CHG. NO.	REV.	CHG.		
FIRST USED ON OPTION/MODEL		QTY.	DESCRIPTION	PART NO.	ITEM NO.
KE8-E					
UNLESS OTHERWISE SPECIFIED DIMENSION IN INCHES. TOLERANCES		DRN. <i>Tom Capen</i>	DATE 22 Feb 77	PARTS LIST	
DECIMALS .XXX - .005		CHK'D. <i>W. M. 102</i>	DATE 2/17/77	TITLE	
ANGLES 10° 30'		ENG. <i>W. M. 102</i>	DATE 2/17/77	EAE FLOW DIAGRAM	
REMOVE BURRS AND BREAK SHARP CORNERS SURFACE QUALITY ✓		PROL. ENG. <i>S. Smith</i>	DATE 2/18/77	SIZE CODE	
MATERIAL		NEXT HIGHER ASSY.	DATE 2/18/77	NUMBER	
FINISH		A-ML-KE8-E		DIFD KE8-E-C1	
SCALE NONE				REV.	
SHEET 1 OF 1				DIST.	

DIGITAL EQUIPMENT CORPORATION
MAYNARD, MASSACHUSETTS

ENGINEERING SPECIFICATION

CONTINUATION SHEET

ENGINEERING SPECIFICATION

DATE 2/15/72

TITLE KE8E ACCEPTANCE PROCEDURE

REVISIONS

REV	DESCRIPTION	CHG NO	ORIG	DATE	APPD BY	DATE

TITLE KE8E ACCEPTANCE PROCEDURE

- 1.Ø Equipment Required
 - A. PDP-8E or PDP-8M
 - B. M8340
 - C. M8341
 - D. 3-H851's
 - E. Teletype
 - F. Maindec-8E-DØLB-D-PB KE8E Instruction Test 1
 - G. Maindec-8E-DØMB-D-PB KE8E Instruction Test 2
 - H. Maindec-8E-DØRA-D-PB KE8E Extended Memory Exerciser

- 2.Ø Check that the M8340 and M8341 have:
 - A. Proper circuit revision.
 - B. Day code.

- 3.Ø Load and run the following diagnostics, consulting the Diagnostic Document for proper operating procedure.
 - A. Maindec-8E-DØLB for two complete program passes which will be indicated by "KE81" being typed out twice.
 - B. Maindec-8E-DØMB for two complete program passes which will be indicated by "KE8E" being typed out twice.
 - C. Maindec-8E-DØRA for five complete program passes which will be indicated by "KE8EME" being typed out five times. At the beginning of the program, be sure to type the correct value defining the maximum amount of memory.

- 4.Ø Shipping Hardware
 - A. M8340
 - B. M8341
 - C. 3-H8351's

- 5.Ø Shipping Software
 - A. Libkit-8E-KE8E
 - B. KE8E Print Set
 - C. KE8E Maintenance Manual

This drawing and specifications, herein, are the property of Digital Equipment Corporation and shall not be reproduced or copied or used in whole or in part as the basis for the manufacture or sale of items without written permission.

ENG <i>Louis H. G.</i>	APPD <i>F. M. Conway</i>	SIZE A	CODE SP	NUMBER KE8-E-0-4	REV
------------------------	--------------------------	------------------	------------	---------------------	-----

SIZE A	CODE SP	NUMBER KE8-E-0-4	REV
------------------	------------	---------------------	-----

DIGITAL EQUIPMENT CORPORATION WORLD-WIDE SALES AND SERVICE

146 Main Street, Maynard, Massachusetts, U.S.A. 01754
Telephone: From Metropolitan Boston: 646-8600 • Elsewhere: (617)-897-5111
TWX: 710-347-0212 Cable: DIGITAL MAYN Telex: 94-8457

UNITED STATES

NORTHEAST

REGIONAL OFFICE

275 Wyman Street, Waltham, Massachusetts 02154
Telephone: (617)-890-0320/0330 TWX: 710-324-6919
WALTHAM

15 Lunda Street, Waltham, Massachusetts 02154
Telephone: (617)-891-1030 TWX: 710-324-6919
CAMBRIDGE/BOSTON

893 Main Street, Cambridge, Massachusetts 02139
Telephone: (617)-491-6130 TWX: 710-320-1167
ROCHESTER

130 Aliens Creek Road, Rochester, New York 14618
Telephone: (716)-461-1700 TWX: 710-253-3078
CONNECTICUT

240 Pomeroy Ave., Meriden, Conn 06450
Telephone: (203)-237-8441/7466 TWX: 710-461-0054
MID-ATLANTIC — SOUTHEAST

REGIONAL OFFICE:

U.S. Route 1, Princeton, New Jersey 08540
Telephone: (609)-452-2940 TWX: 510-685-2338
NEW YORK

95 Cedar Lane, Englewood, New Jersey 07631
Telephone: (201)-871-4984, (212)-594-6955, (212)-736-0447
TWX: 710-991-9721
NEW JERSEY

1259 Route 46, Parsippany, New Jersey 07054
Telephone: (201)-335-3300 TWX: 710-987-8319
PRINCETON

U.S. Route 1, Princeton, New Jersey 08540
Telephone: (609)-452-2940 TWX: 510-685-2338
LONG ISLAND

1 Huntington Quadrangle
Suite 1507 Huntington Station, New York 11746
Telephone: (516)-694-4131, (212)-895-8095
PHILADELPHIA

Station Square Three, Paoli, Pennsylvania 19301
Telephone: (215)-647-4900/4410 Telex: 510-668-8395
WASHINGTON

Executive Building
6811 Kenilworth Ave., Riverdale, Maryland 20840
Telephone: (301)-779-1600/752-8797 TWX: 710-826-9662
DURHAM/CHAPEL HILL

2704 Chapel Hill Boulevard
Durham, North Carolina 27707
Telephone: (919)-489-3347 TWX: 510-927-0912
ORLANDO

Suite 130, 7001 Lake Ellenor Drive, Orlando, Florida 32809
Telephone: (305)-851-4450 TWX: 810-850-0180
ATLANTA

2815 Clearview Place, Suite 100,
Atlanta, Georgia 30340
Telephone: (404)-451-3734/3735/3736 TWX: 810-757-4223

MID-ATLANTIC — SOUTHEAST (cont.)

KNOXVILLE

6311 Kingston Pike, Suite 21E
Knoxville, Tennessee 37919
Telephone: (615)-588-6571 TWX: 810-583-0123

CENTRAL

REGIONAL OFFICE:

1850 Frontage Road, Northbrook, Illinois 60062
Telephone: (312)-498-2500 TWX: 810-686-0655
PITTSBURGH

REGIONAL OFFICE:

1850 Frontage Road, Northbrook, Illinois 60062
Telephone: (312)-498-2500 TWX: 810-686-0655
PITTSBURGH

REGIONAL OFFICE:

400 Penn Center Boulevard
Pittsburgh, Pennsylvania 15235
Telephone: (412)-243-9404, TWX: 710-797-3657
CHICAGO

1850 Frontage Road, Northbrook, Illinois 60062
Telephone: (312)-498-2500 TWX: 810-686-0655
ANN ARBOR

230 Huron View Boulevard, Ann Arbor, Michigan 48103
Telephone: (313)-761-1150 TWX: 810-223-6053
INDIANAPOLIS

21 Beachway Drive — Suite G
Indianapolis, Indiana 46224
Telephone: (317)-243-8341 TWX: 810-341-3436
MINNEAPOLIS

Suite 111, 8030 Cedar Avenue South,
Minneapolis, Minnesota 55420
Telephone: (612)-854-6562-3-4-5 TWX: 510-976-2818
CLEVELAND

Park Hill Bldg., 35104 Euclid Ave
Willoughby, Ohio 44094
Telephone: (216)-946-8484 TWX: 810-427-2608
ST. LOUIS

Suite 110, 115 Progress Pky., Maryland Heights,
Missouri 63043
Telephone: (314)-878-4310 TWX: 910-764-0831
DAYTON

3101 Kettering Blvd., Dayton, Ohio 45439
Telephone: (513)-299-7377 TWX: 810-459-1676
MILWAUKEE

6531 W. Capitol Drive, Milwaukee, Wisconsin 53222
Telephone: (414)-463-9110 TWX: 910-262-1199
DALLAS

8955 North Stemmons Freeway
Dallas, Texas 75247
Telephone: (214)-638-4880 TWX: 910-861-4000
HOUSTON

3417 Milam Street, Suite A, Houston, Texas 77002
Telephone: (713)-524-2951 TWX: 910-881-1651

3101 Kettering Blvd., Dayton, Ohio 45439
Telephone: (513)-299-7377 TWX: 810-459-1676
MILWAUKEE

6531 W. Capitol Drive, Milwaukee, Wisconsin 53222
Telephone: (414)-463-9110 TWX: 910-262-1199
DALLAS

8955 North Stemmons Freeway
Dallas, Texas 75247
Telephone: (214)-638-4880 TWX: 910-861-4000
HOUSTON

3417 Milam Street, Suite A, Houston, Texas 77002
Telephone: (713)-524-2951 TWX: 910-881-1651

CENTRAL (cont.)

NEW ORLEANS

3100 Ridgelake Drive, Suite 108
Metairie, Louisiana 70002
Telephone: 504-837-0257
WEST

REGIONAL OFFICE

310 Soquel Way, Sunnyvale, California 94086
Telephone: (408)-735-9200
ANAHEIM

801 E. Ball Road, Anaheim, California 92805
Telephone: (714)-776-6932/6730 TWX: 910-591-1189
WEST LOS ANGELES

1510 Cotner Avenue, Los Angeles, California 90025
Telephone: (213)-479-3791/4316 TWX: 910-342-6999
SAN DIEGO

3444 Hancock Street
San Diego, California 92110
Telephone: (714)-298-0591, 0593 TWX: 910-335-1230
SAN FRANCISCO

1403 Terra Bella
Mountain View, California 94040
Telephone: (415)-964-6200 TWX: 910-373-1266
PALO ALTO

560 San Antonio Rd., Palo Alto, California 94306
Telephone: (415)-969-6200 TWX: 910-373-1266
OAKLAND

7850 Edgewater Drive
Oakland, California 94621
Telephone: (415)-635-5453/7830 TWX: 910-366-7238
ALBUQUERQUE

6303 Indian School Road, N.E.
Albuquerque, N.M. 87110
Telephone: (505)-296-5411/5428 TWX: 910-989-0614
DENVER

2305 South Colorado Blvd., Suite #5
Denver, Colorado 80222
Telephone: (303)-757-3332/758-1656/758-1659
TWX: 910-931-2650
SEATTLE

1521 130th N.E., Bellevue, Washington 98005
Telephone: (206)-454-4058/455-5404 TWX: 910-443-2306
SALT LAKE CITY

431 South 3rd East, Salt Lake City, Utah 84111
Telephone: (801)-328-9838 TWX: 910-925-5834
PHOENIX

4358 East Broadway Road
Phoenix, Arizona 85040
Telephone: (602) 268-3488 TWX: 910-950-4691
PORTLAND

Suite 188
5319 S.W. Canyon Court, Portland, Ore. 97221
Telephone: (503) 297-3761/3765

2305 South Colorado Blvd., Suite #5
Denver, Colorado 80222
Telephone: (303)-757-3332/758-1656/758-1659
TWX: 910-931-2650
SEATTLE

1521 130th N.E., Bellevue, Washington 98005
Telephone: (206)-454-4058/455-5404 TWX: 910-443-2306
SALT LAKE CITY

431 South 3rd East, Salt Lake City, Utah 84111
Telephone: (801)-328-9838 TWX: 910-925-5834
PHOENIX

4358 East Broadway Road
Phoenix, Arizona 85040
Telephone: (602) 268-3488 TWX: 910-950-4691
PORTLAND

Suite 188
5319 S.W. Canyon Court, Portland, Ore. 97221
Telephone: (503) 297-3761/3765

2305 South Colorado Blvd., Suite #5
Denver, Colorado 80222
Telephone: (303)-757-3332/758-1656/758-1659
TWX: 910-931-2650
SEATTLE

1521 130th N.E., Bellevue, Washington 98005
Telephone: (206)-454-4058/455-5404 TWX: 910-443-2306
SALT LAKE CITY

431 South 3rd East, Salt Lake City, Utah 84111
Telephone: (801)-328-9838 TWX: 910-925-5834
PHOENIX

4358 East Broadway Road
Phoenix, Arizona 85040
Telephone: (602) 268-3488 TWX: 910-950-4691
PORTLAND

Suite 188
5319 S.W. Canyon Court, Portland, Ore. 97221
Telephone: (503) 297-3761/3765

2305 South Colorado Blvd., Suite #5
Denver, Colorado 80222
Telephone: (303)-757-3332/758-1656/758-1659
TWX: 910-931-2650
SEATTLE

1521 130th N.E., Bellevue, Washington 98005
Telephone: (206)-454-4058/455-5404 TWX: 910-443-2306
SALT LAKE CITY

431 South 3rd East, Salt Lake City, Utah 84111
Telephone: (801)-328-9838 TWX: 910-925-5834
PHOENIX

4358 East Broadway Road
Phoenix, Arizona 85040
Telephone: (602) 268-3488 TWX: 910-950-4691
PORTLAND

Suite 188
5319 S.W. Canyon Court, Portland, Ore. 97221
Telephone: (503) 297-3761/3765

2305 South Colorado Blvd., Suite #5
Denver, Colorado 80222
Telephone: (303)-757-3332/758-1656/758-1659
TWX: 910-931-2650
SEATTLE

1521 130th N.E., Bellevue, Washington 98005
Telephone: (206)-454-4058/455-5404 TWX: 910-443-2306
SALT LAKE CITY

431 South 3rd East, Salt Lake City, Utah 84111
Telephone: (801)-328-9838 TWX: 910-925-5834
PHOENIX

4358 East Broadway Road
Phoenix, Arizona 85040
Telephone: (602) 268-3488 TWX: 910-950-4691
PORTLAND

INTERNATIONAL (cont.)

FRANCE

Equipment Digital S.A.R.L.
PARIS
327 Rue de Charenton, 75 Paris 12 9ME, France
Telephone: 344-76-07 Telex: 21339
GRENOBLE

10 rue Auguste Rivier, F-38 Grenoble, France
Telephone: (76) 87 87 32 Telex: 32 882 F (Code 212)

GERMANY

Digital Equipment GmbH
MUNICH
8 Muenchen 13, Wallensteinplatz 2
Telephone: 0811-39031 Telex: 524-226
COLOGNE

5 Koeln, Bismarckstrasse 7,
Telephone: 0221-522181 Telex: 888-2269
Telegram: Flip Chip Koein
FRANKFURT

6078 Neu-Isenburg 2
Am Forsthaus Gravenbruch 5-7
Telephone: 06102-5526 Telex: 41-76-82
HANNOVER

3 Hannover, Podbielskistrasse 102
Telephone: 0511-69-70-95 Telex: 922-952

AUSTRIA

Digital Equipment Corporation Ges.m.b.H
VIENNA
Mariahilferstrasse 136, 1150 Vienna 15, Austria
Telephone: 85 51 86
UNITED KINGDOM

Digital Equipment Co., Ltd.
U.K. HEADQUARTERS

Arkwright Road, Reading, Berks.
Telephone: 0734-583555 Telex: 84327
READING

The Evening Post Building, Tessa Road
Reading, Berks.
BIRMINGHAM

29/31, Birmingham Road, Sutton Coldfield, Warwicks.
Telephone: (0044) 21-355 5501 Telex: 337 060
MANCHESTER

13 Upper Precinct, Walkden, Manchester M28 5AZ
Telephone: 061-790-8411 Telex: 668666
LONDON

Bitton House, Uxbridge Road, Ealing, London W.5.
Telephone: 01-579-2334 Telex: 22371
EDINBURGH

Shiel House, Craigshill, Livingston,
West Lothian, Scotland
Telephone: 32705 / Telex: 727113
NETHERLANDS

THE HAGUE
Digital Equipment N.V.

Sir Winston Churchilllaan 370
Rijswijk/The Hague, Netherlands
Telephone: 070-995-160 Telex: 32533
BELGIUM

BRUSSELS
Digital Equipment N.V./S.A.

108 Rue D'Arion
Auckland, Belgium
Telephone: 02-139256 Telex: 25297

6 Montrose Avenue
Norwood, South Australia 5067
Telephone: 631-339 Telex: AA82625

139 Merivale Street, South Brisbane
Queensland, Australia 4101
Telephone: 444-047 Telex: AA40616
ADELAIDE

63 Murray Street
West Perth, Western Australia 6005
Telephone: 214-993 Telex: AA92140
BRISBANE

139 Merivale Street, South Brisbane
Queensland, Australia 4101
Telephone: 444-047 Telex: AA40616
ADELAIDE

6 Montrose Avenue
Norwood, South Australia 5067
Telephone: 631-339 Telex: AA82625
NORWAY

Digital Equipment
OSLO

c/o Firma Service
Waldemarbransgate 84-B-86
Oslo 1, Norway
Telephone: 37 19 85, 37 02 30 Telex: 166 43

Digital Equipment Corporation
COPENHAGEN
Vesterbrogade 140, 1620 Copenhagen V

Digital Equipment Corporation S.A.
GENEVA

81 Route de l'Aire
CH-8006 Zurich, Switzerland
Telephone: 42 79 50 Telex: 22 683
ZURICH

Scheuchzerstrasse 21
CH-8006 Zurich, Switzerland
Telephone: 01/60 35 66* Telex: 56059
ITALY

Digital Equipment S.p.A.
MILAN

Corso Garibaldi 49, 20121 Milano, Italy
Telephone: 872 748 694 394 Telex: 33615
SPAIN

Ataio Ingenieros S.A., Enrique Larreta 12, Madrid 16
Telephone: 872 748 694 394 Telex: 33615
MADRID

NORWAY

Digital Equipment
OSLO

c/o Firma Service
Waldemarbransgate 84-B-86
Oslo 1, Norway
Telephone: 37 19 85, 37 02 30 Telex: 166 43

DENMARK

Digital Equipment Corporation
COPENHAGEN
Vesterbrogade 140, 1620 Copenhagen V

SWITZERLAND

Digital Equipment Corporation S.A.
GENEVA

81 Route de l'Aire
CH-8006 Zurich, Switzerland
Telephone: 42 79 50 Telex: 22 683
ZURICH

Scheuchzerstrasse 21
CH-8006 Zurich, Switzerland
Telephone: 01/60 35 66* Telex: 56059

ARGENTINA

Digital Equipment of Canada, Ltd.
2210 West 12th Avenue
Vancouver 9, British Columbia, Canada
Telephone: (604)-736-5616 TWX: 610-929-2006
Buenos Aires

Coasin S.A.
Virrey del Pino 4071, Buenos Aires
Telephone: 52-3185 Telex: 012-2284

Caracas

Coasin S.A. (Sales only)
Apartado 50939
Salina Grande No. 1, Caracas
Telephone: 72-9637 Cable: INSTRUVEN

Chile

Coasin Chile Ltda. (sales only)
Casilla 14588, Correo 15, Santiago
Telephone: 396713 Cable: COACHIL

Japan

Rikei Trading Co., Ltd. (sales only)
Kozato-Kaikan Bldg.
No. 18-14, Nishishimbashi 1-chome
Minato-Ku, Tokyo, Japan
Telephone: 5915246 Telex: 781-4208
Digital Equipment Corporation International
Kowa Building No. 17, Second Floor
2-7 Nishi-Azabu 1-Chome
Minato-Ku, Tokyo, Japan
Telephone: 404-5894/6 Telex: TK-6428

Melbourne

60 Park Street, South Melbourne, Victoria, 3205
Telephone: 696-142 Telex: AA40616
Perth

643 Murray Street
West Perth, Western Australia 6005
Telephone: 214-993 Telex: AA92140
Brisbane

139 Merivale Street, South Brisbane
Queensland, Australia 4101
Telephone: 444-047 Telex: AA40616
Adelaide

6 Montrose Avenue
Norwood, South Australia 5067
Telephone: 631-339 Telex: AA82625
Canada

Digital Equipment of Canada, Ltd.
Canadian Headquarters

150 Rosmond Street, Carleton Place, Ontario
Telephone: (613)-257-2615 TWX: 610-561-1651
Ottawa

120 Holland Street, Ottawa 3, Ontario K1Y 0X7
Telephone: (613)-725-2193 TWX: 610-562-8907
Toronto

230 Lakeshore Road East, Port Credit, Ontario
Telephone: (416)-274-1241 TWX: 610-492-4306
Montreal

9675 Cote de Liesse Road
Dorval, Quebec, Canada 760
Telephone: 514-636-9393 TWX: 610-422-4124
Edmonton

5531 - 103 Street
Edmonton, Alberta, Canada
Telephone: (403)-434-9333 TWX: 610-831-2248
Vancouver

Digital Equipment of Canada